

JACKSON COUNTY
 GEODETIC CONTROL

JN 97009

MAP PROJECTION: LAMBERT

ORDER OF SURVEY: FIRST

NAD 83/86 * OHIO STATE PLANE COORDINATE SYSTEM * SOUTH ZONE * U.S. SURVEY FOOT

COUNTY	NAME OF STATION	YEAR
JACKSON	45 HILL CEM	1997

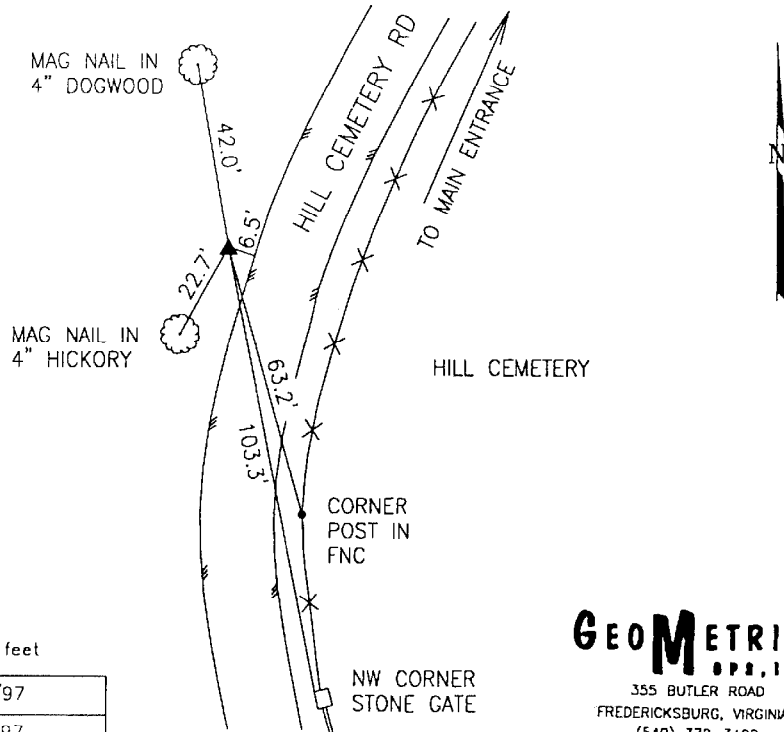
N: 328135.053 E: 1981711.875 LAT: 38°54'03.32199" LONG: 82°27'12.87539"

GRID FACTOR: 0.99997128 SEA LEVEL FACTOR: 0.99996354 \ominus ANGLE: +0°01'46.04"

ESTABLISHED BY: GeoMetrics GPS, INC.	DISTANCES AND DIRECTIONS TO REFERENCE MARKS AND PROMINENT OBJECTS OBSERVED AT STATION		
	OBJECT	DISTANCE	AZIMUTH
VERTICAL DATUM NAVD 88	(SEE SKETCH BELOW)		
ELEVATION (FT.) 762.28			
VERTICAL ORDER: THIRD			

DESCRIPTION OF STATION: The station is a standard Jackson County, Ohio aluminum survey disk stamped HILL CEM 45 1997 set flush with the ground in the top of a reinforced poured-in-place concrete monument located about 1 mile west of Centerville, Ohio. To reach the station from the intersection of Route 35 and Route 279 proceed south along Route 279 a distance of 0.07 miles to its intersection with Route 6A, Thurman Road. Turn right and proceed west along Thurman Road 0.01 miles to its intersection with Hill Cemetery Road. Turn Right and proceed north along Hill Cemetery Road a distance of 0.25 miles to the station on the left.

SKETCH OF STATION:
 APPROX. SCALE: 1" = 40'



THIS SURVEY DATA PREPARED
 USING 1 meter = 3.28083333 feet

PREPARED BY: CEN	3/97
CHECKED BY: DAR	3/97

GEOMETRICS
 GPS, INC.
 355 BUTLER ROAD
 FREDERICKSBURG, VIRGINIA
 (540) 372-3499