

JACKSON COUNTY
 GEODETIC CONTROL

JN 97009

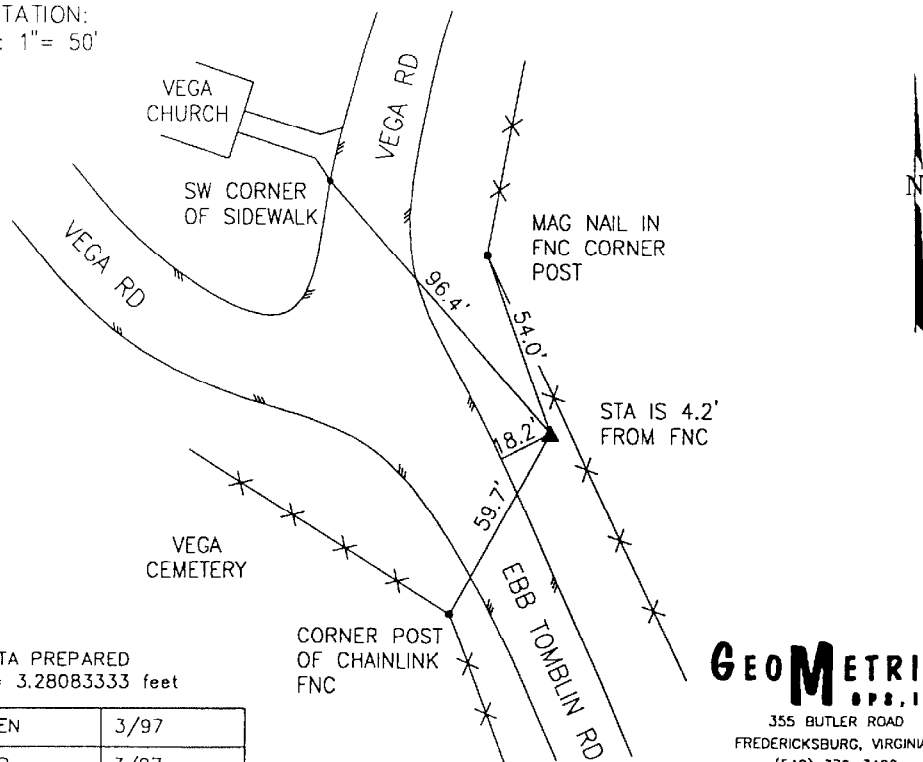
MAP PROJECTION: LAMBERT
 NAD 83/86 * OHIO STATE PLANE COORDINATE SYSTEM * SOUTH ZONE * U.S. SURVEY FOOT

ORDER OF SURVEY: FIRST

COUNTY	NAME OF STATION		YEAR
JACKSON	43 VEGA		1997
N: 348979.144	E: 1969335.671	LAT: 38°57'29.38863"	LONG: 82°29'49.42053"
GRID FACTOR: 0.99996340	SEA LEVEL FACTOR: 0.99995700	ϕ ANGLE: +0°00'06.71"	
ESTABLISHED BY: GeoMetrics GPS, INC.	DISTANCES AND DIRECTIONS TO REFERENCE MARKS AND PROMINENT OBJECTS OBSERVED AT STATION		
	OBJECT	DISTANCE	AZIMUTH
VERTICAL DATUM NAVD 85	(SEE SKETCH BELOW)		
ELEVATION (FT.) 899.00			
VERTICAL ORDER: THIRD			

DESCRIPTION OF STATION: The station is a standard Jackson County, Ohio aluminum survey disk stamped VEGA 43 1997 set flush with the ground in the top of a reinforced poured-in-place concrete monument located in Vega, Ohio. To reach the station from the intersection of Route 35 and Route 327 proceed southeast along Route 35 a distance of 1.6 miles to its intersection with Route 41. Turn left and proceed south along Route 41 a distance of 0.1 miles to its intersection with Vega Road. Continue ahead proceeding south along Vega Road a distance of 1.9 miles to its intersection with Ebb Tomblin Road and the station on the left near Vega Church.

SKETCH OF STATION:
 APPROX. SCALE: 1" = 50'



THIS SURVEY DATA PREPARED
 USING 1 meter = 3.28083333 feet

PREPARED BY: CEN	3/97
CHECKED BY: DAR	3/97

GEOMETRICS
 GPS, INC.
 355 BUTLER ROAD
 FREDERICKSBURG, VIRGINIA
 (540) 372-3499