

**JACKSON COUNTY  
GEODETIC CONTROL**

JN 97009

MAP PROJECTION: LAMBERT

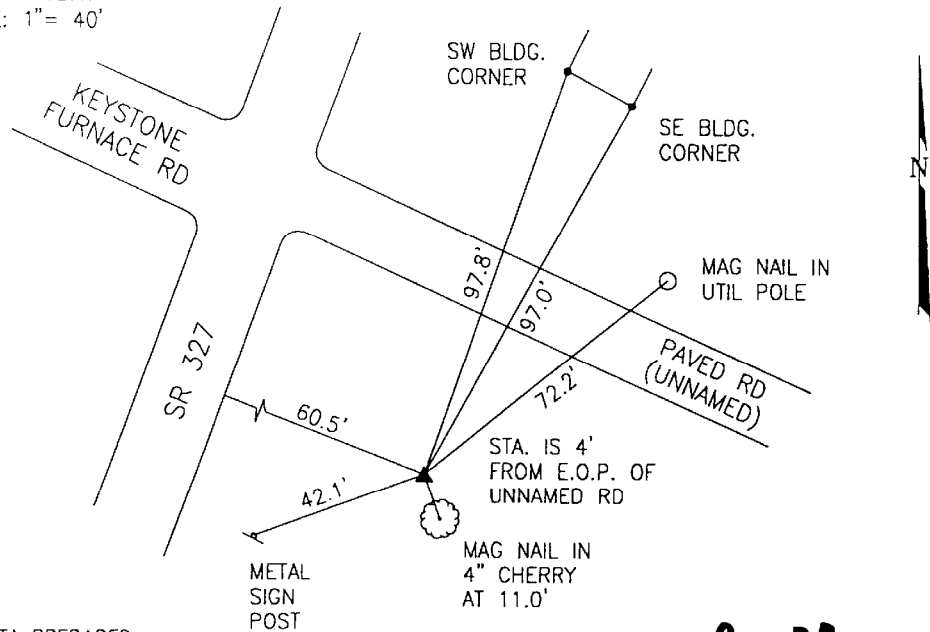
ORDER OF SURVEY: FIRST

NAD 83/86 \* OHIO STATE PLANE COORDINATE SYSTEM \* SOUTH ZONE \* U.S. SURVEY FOOT

COUNTY		NAME OF STATION		YEAR
JACKSON		40 RIDGELAND		1997
N: 369356.114	E: 1961328.341	LAT: 39°00'50.79432"	LONG: 82°31'30.86418"	
GRID FACTOR: 0.99995666	SEA LEVEL FACTOR: 0.99996791	ϕ ANGLE: --0°00'57.66"		
ESTABLISHED BY: GeoMetrics GPS, INC.	DISTANCES AND DIRECTIONS TO REFERENCE MARKS AND PROMINENT OBJECTS OBSERVED AT STATION			
	OBJECT	DISTANCE	AZIMUTH	
VERTICAL DATUM NAVD 88	(SEE SKETCH BELOW)			
ELEVATION (FT.) 670.98				
VERTICAL ORDER: THIRD				

DESCRIPTION OF STATION: The station is a standard Jackson County, Ohio aluminum survey disk stamped RIDGELAND 40 1997 set flush with the ground in the top of a reinforced poured-in-place concrete monument located in Ridgeland, Jackson County, Ohio. To reach the station from the intersection of Route 35 and Route 327 proceed north along Route 327 for a distance of 1.7 miles to its intersection with Keystone Furnace Road and the station on the right.

SKETCH OF STATION:  
APPROX. SCALE: 1" = 40'



THIS SURVEY DATA PREPARED  
USING 1 meter = 3.28083333 feet

PREPARED BY: CEN	3/97
CHECKED BY: DAR	3/97

**GEOMETRICS**  
GPS, INC.

355 BUTLER ROAD  
FREDERICKSBURG, VIRGINIA  
(540) 372-3499