

JACKSON COUNTY, OHIO  
 GEODETIC CONTROL SURVEY

W.O. 96017

MAP PROJECTION: LAMBERT

ORDER OF SURVEY: FIRST

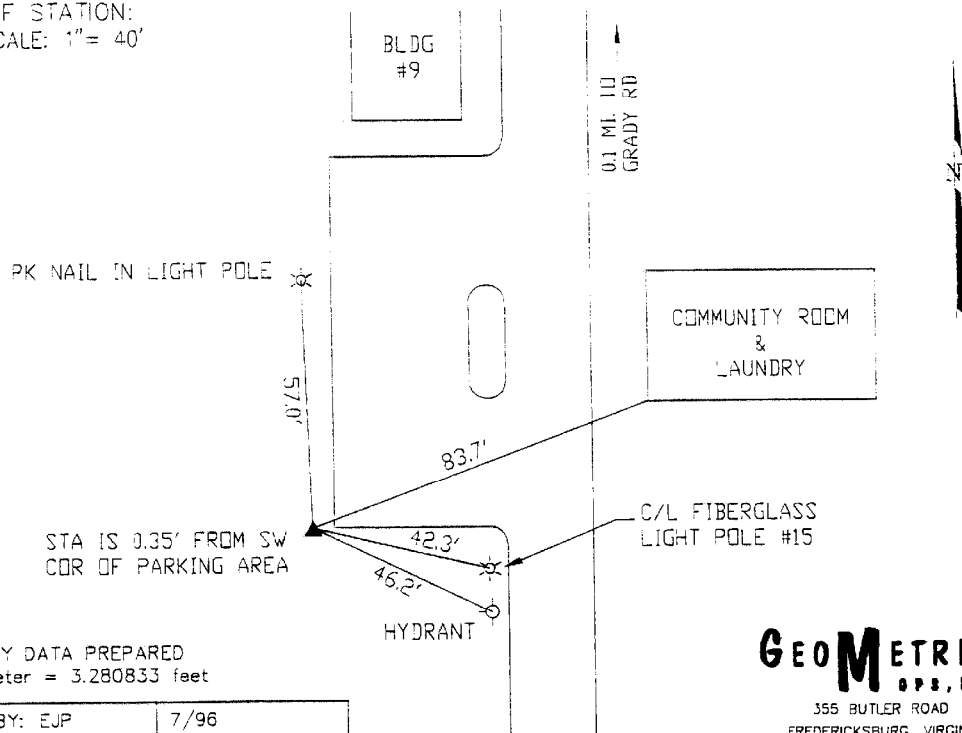
NAD 83/86 \* OHIO STATE PLANE COORDINATE SYSTEM \* SOUTH ZONE

COUNTY		NAME OF STATION		YEAR
JACKSON COUNTY		4 BUNDY		1996
N: 414031.978	E: 1958612.296	LAT.: 39°08'12.37980"	LONG.: 82°32'05.49472"	
GRID FACTOR: 0.99994519	SEA LEVEL FACTOR: 0.99996313	ϕ ANGLE: -0°01'19.63"		
ESTABLISHED BY: GeoMetrics GPS, INC.	YEAR 1996	DISTANCES AND DIRECTIONS TO REFERENCE MARKS AND PROMINENT OBJECTS OBSERVED AT STATION		
		OBJECT	DISTANCE-FT.	MAG. AZIMUTH
VERTICAL DATUM NAVD 88		(SEE SKETCH BELOW)		
ELEVATION (FT.) 770.80				
VERTICAL ORDER: THIRD				

DESCRIPTION OF STATION:

The station is a standard Jackson County, Ohio aluminum survey disk stamped BUNDY 4 1996 set flush with the ground in the top of a reinforced poured-in-place concrete monument located in Jackson County, Ohio about 1.5 miles north of the town of Wellston. To reach the station from the intersection of U.S. Highway 35 and Route 32 in Jackson proceed east along Route 32 a distance of 5.4 miles to its intersection with Route 327. Turn left and proceed north along Route 327 a distance of 1.7 miles to its intersection with Route 93. Continue ahead and proceed north along Route 93 a distance of 2.0 miles to its intersection with Grady Lane. Turn left and proceed west along Grady Lane a distance of 0.3 miles to its intersection with a townhouse development named Bundy Heights. Turn left and proceed south along paved entrance road a distance of 0.05 miles to a parking area and the station on the right.

SKETCH OF STATION:  
 APPROX. SCALE: 1" = 40'



PREPARED BY: EJP	7/96
CHECKED BY: DAR	7/96

**GEOMETRICS**  
 GPS, INC.

355 BUTLER ROAD  
 FREDERICKSBURG, VIRGINIA  
 (540) 372-3499