

JACKSON COUNTY
 GEODETIC CONTROL

JN 97009

MAP PROJECTION: LAMBERT

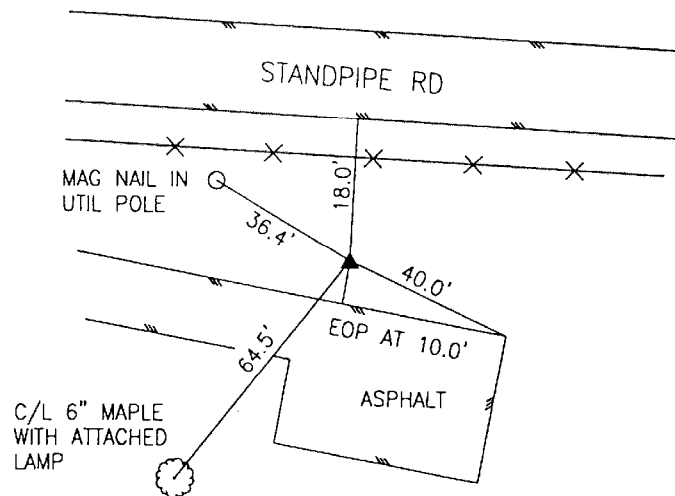
ORDER OF SURVEY: FIRST

NAD 83/86 * OHIO STATE PLANE COORDINATE SYSTEM * SOUTH ZONE * U.S. SURVEY FOOT

COUNTY	NAME OF STATION		YEAR
JACKSON	39 DEERLAND		1997
N: 371680.410	E: 1942880.519	LAT: 39°01'13.65217"	LONG: 82°35'24.62554"
GRID FACTOR: 0.99995596	SEA LEVEL FACTOR: 0.99996161		ϕ ANGLE: -0°03'25.98"
ESTABLISHED BY: GeoMetrics GPS, INC.	DISTANCES AND DIRECTIONS TO REFERENCE MARKS AND PROMINENT OBJECTS OBSERVED AT STATION		
	OBJECT	DISTANCE	AZIMUTH
VERTICAL DATUM NAVD 88	(SEE SKETCH BELOW)		
ELEVATION (FT.) 802.60			
VERTICAL ORDER: THIRD			

DESCRIPTION OF STATION: The station is a standard Jackson County, Ohio aluminum survey disk stamped DEERLAND 39 1997 set flush with the ground in the top of a reinforced poured-in-place concrete monument located in Jackson County, Ohio about 1 mile south of Jackson. To reach the station from the intersection of Route 32 and Route 93 proceed south along Route 93 for a distance of 1.7 miles to its intersection with Standpipe Road. Turn left and proceed east along Standpipe Road a distance of 1 mile to its intersection with Deerland Resort and the station on the right. Permission to set the station was obtained from Bill Stuckley, owner of Deerland Resort (614) 286-6422.

SKETCH OF STATION:
 APPROX. SCALE: 1" = 40'



THIS SURVEY DATA PREPARED
 USING 1 meter = 3.28083333 feet

PREPARED BY: CEN	3/97
CHECKED BY: DAR	3/97

GEOMETRICS
 GPS, INC.

355 BUTLER ROAD
 FREDERICKSBURG, VIRGINIA
 (540) 372-3499