

JACKSON COUNTY JN 97009
 GEODETIC CONTROL
 MAP PROJECTION: LAMBERT ORDER OF SURVEY: FIRST
 NAD 83/86 * OHIO STATE PLANE COORDINATE SYSTEM * SOUTH ZONE * U.S. SURVEY FOOT

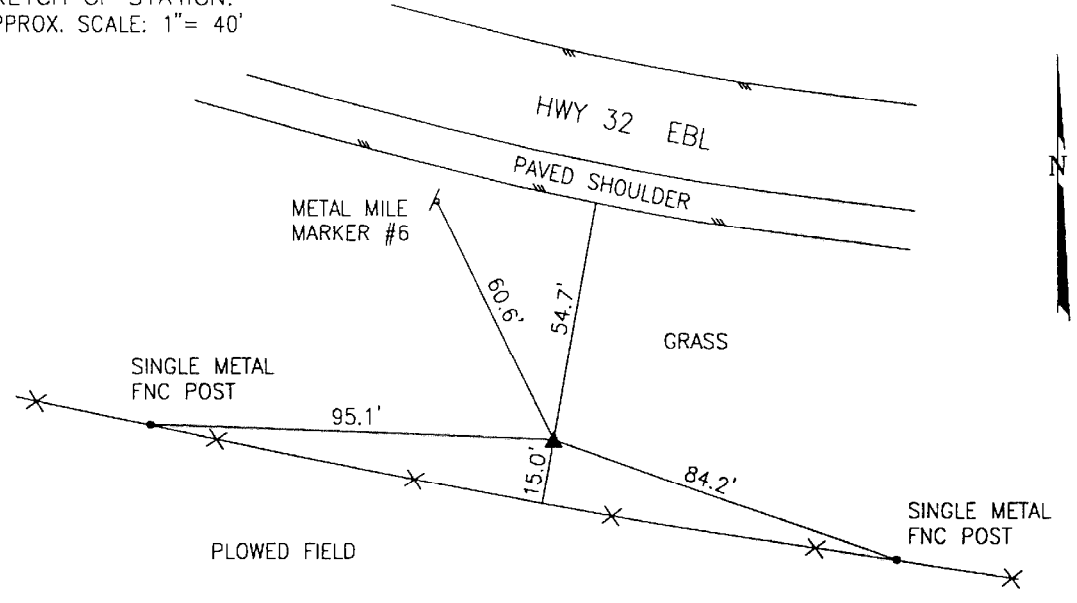
COUNTY	NAME OF STATION	YEAR
JACKSON	37 MILE SIX	1997

N: 367283.523	E: 1913567.255	LAT: 39°00'29.73658"	LONG: 82°41'35.93505"
GRID FACTOR: 0.99995732	SEA LEVEL FACTOR: 0.99996198	⊕ ANGLE: -0°07'21.58"	

ESTABLISHED BY: GeoMetrics GPS, INC.	DISTANCES AND DIRECTIONS TO REFERENCE MARKS AND PROMINENT OBJECTS OBSERVED AT STATION		
	OBJECT	DISTANCE	AZIMUTH
VERTICAL DATUM NAVD 88	(SEE SKETCH BELOW)		
ELEVATION (FT.) 794.83			
VERTICAL ORDER: THIRD			

DESCRIPTION OF STATION: The station is a standard Jackson County, Ohio aluminum survey disk stamped MILE SIX 37 1997 set flush with the ground in the top of a reinforced poured-in-place concrete monument located in Jackson County, Ohio about 4 miles southwest of Jackson. To reach the station from the intersection of Route 32 and Route 776 proceed east along Route 32 for a distance of 0.5 miles to mile post 6 and the station on the right.

SKETCH OF STATION:
APPROX. SCALE: 1" = 40'



THIS SURVEY DATA PREPARED
USING 1 meter = 3.28083333 feet

PREPARED BY: CEN	3/97
CHECKED BY: DAR	3/97

GEOMETRICS
GPS, INC.
355 BUTLER ROAD
FREDERICKSBURG, VIRGINIA
(540) 372-3499