

**JACKSON COUNTY
GEODETIC CONTROL**

JN 97009

MAP PROJECTION: LAMBERT

ORDER OF SURVEY: FIRST

NAD 83/86 * OHIO STATE PLANE COORDINATE SYSTEM * SOUTH ZONE * U.S. SURVEY FOOT

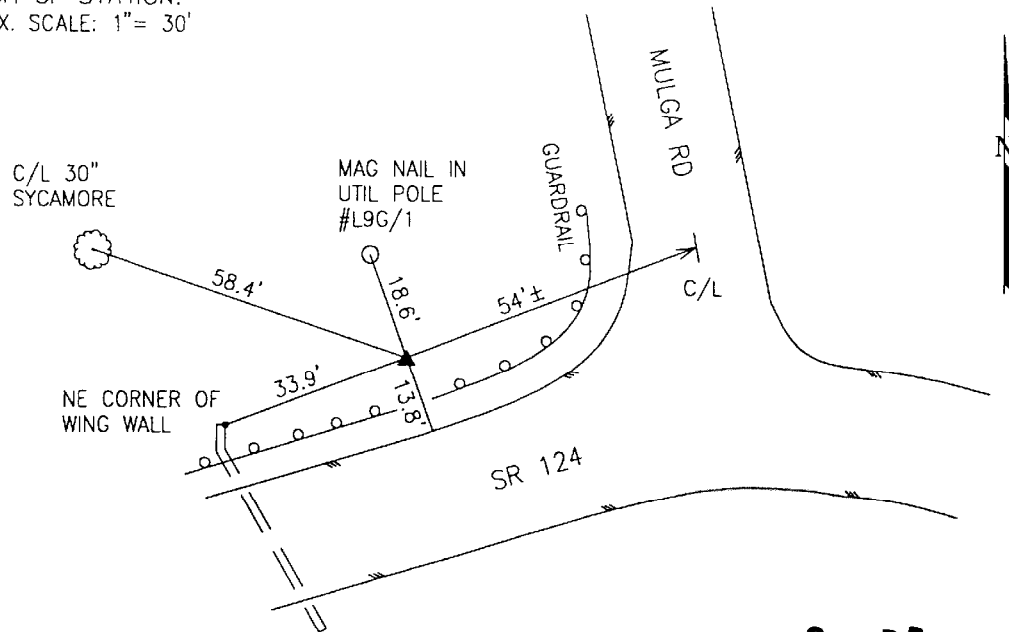
COUNTY	NAME OF STATION	YEAR
JACKSON	35 RICH RUN	1997

N: 398807.604	E: 1982738.518	LAT: 39°05'41.87614"	LONG: 82°26'59.39211"
GRID FACTOR: 0.99994859	SEA LEVEL FACTOR: 0.99996710	ϕ ANGLE: +0°01'54.60"	

ESTABLISHED BY: GeoMetrics GPS, INC.	DISTANCES AND DIRECTIONS TO REFERENCE MARKS AND PROMINENT OBJECTS OBSERVED AT STATION		
	OBJECT	DISTANCE	AZIMUTH
VERTICAL DATUM NAVD 88	(SEE SKETCH BELOW)		
ELEVATION (FT.) 687.72			
VERTICAL ORDER: THIRD			

DESCRIPTION OF STATION: The station is a standard Jackson County, Ohio aluminum survey disk stamped RICH RUN 35 1997 set flush with the ground in the top of a reinforced poured-in-place concrete monument located in Jackson County, Ohio about 9 miles northeast of Jackson. To reach the station from the intersection of Route 124 and Route 327 at Berlin Crossroads proceed east along Route 124 for a distance of 5.2 miles to its intersection with Mulga Road, and the station on the left.

SKETCH OF STATION:
APPROX. SCALE: 1" = 30'



THIS SURVEY DATA PREPARED
USING 1 meter = 3.28083333 feet

PREPARED BY: CEN	3/97
CHECKED BY: DAR	3/97

GEOMETRICS
GPS, INC.

355 BUTLER ROAD
FREDERICKSBURG, VIRGINIA
(540) 372-3499