

JACKSON COUNTY
 GEODETIC CONTROL

JN 97009

MAP PROJECTION: LAMBERT

ORDER OF SURVEY: FIRST

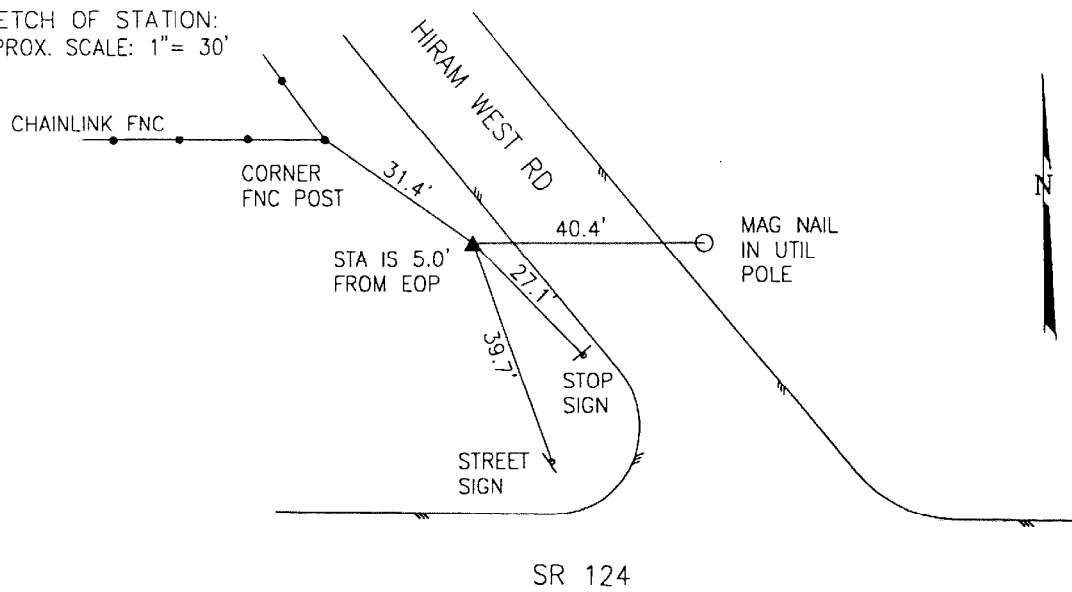
NAD 83/86 * OHIO STATE PLANE COORDINATE SYSTEM * SOUTH ZONE * U.S. SURVEY FOOT

COUNTY	NAME OF STATION		YEAR
JACKSON	34 HIRAM		1997
N: 394578.214	E: 1967286.772	LAT: 39°05'00.10998"	LONG: 82°30'15.38660"
GRID FACTOR: 0.99994963	SEA LEVEL FACTOR: 0.99996501	⊖ ANGLE: -0°00'09.76"	

ESTABLISHED BY: GeoMetrics GPS, INC.	DISTANCES AND DIRECTIONS TO REFERENCE MARKS AND PROMINENT OBJECTS OBSERVED AT STATION		
	OBJECT	DISTANCE	AZIMUTH
VERTICAL DATUM NAVD 88	(SEE SKETCH BELOW)		
ELEVATION (FT.) 731.52			
VERTICAL ORDER: THIRD			

DESCRIPTION OF STATION: The station is a standard Jackson County, Ohio aluminum survey disk stamped HIRAM 34 1997 set flush with the ground in the top of a reinforced poured-in-place concrete monument located in Jackson County, Ohio about 6 miles northeast of Jackson. To reach the station from the intersection of Route 124 and Route 327 at Berlin Crossroads proceed east along Route 124 for a distance of 1.9 miles to its intersection with Hiram West Road and the station on the left.

SKETCH OF STATION:
 APPROX. SCALE: 1" = 30'



THIS SURVEY DATA PREPARED
 USING 1 meter = 3.28083333 feet

PREPARED BY: CEN	3/97
CHECKED BY: DAR	3/97

GEOMETRICS
 ops, inc.

355 BUTLER ROAD
 FREDERICKSBURG, VIRGINIA
 (540) 372-3499