

JACKSON COUNTY
 GEODETIC CONTROL

JN 97009

MAP PROJECTION: LAMBERT

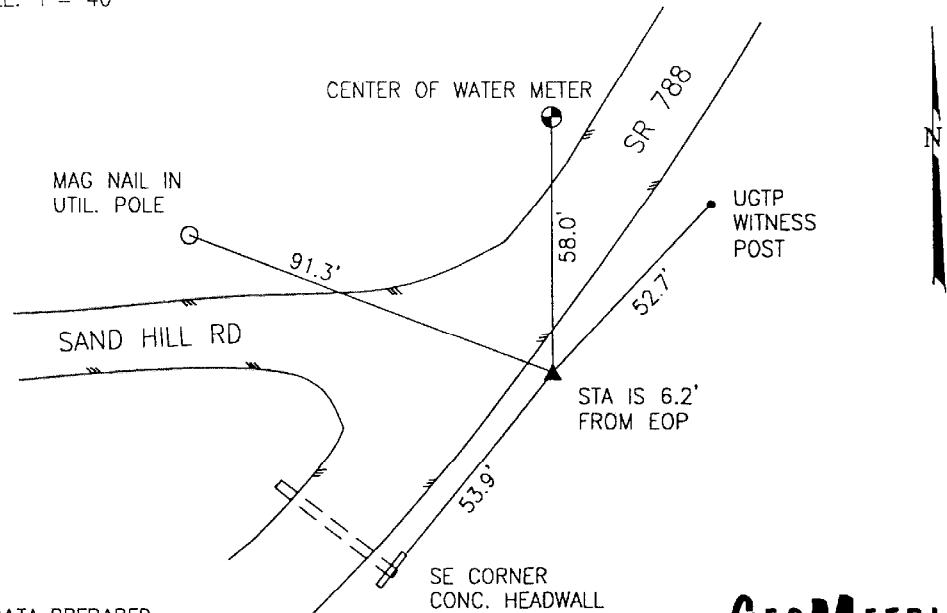
ORDER OF SURVEY: FIRST

NAD 83/86 * OHIO STATE PLANE COORDINATE SYSTEM * SOUTH ZONE * U.S. SURVEY FOOT

COUNTY	NAME OF STATION		YEAR
JACKSON	32 SAND HILL		1997
N: 397070.274	E: 1944566.673	LAT: 39°05'24.63232"	LONG: 82°35'03.56064"
GRID FACTOR: 0.99994902	SEA LEVEL FACTOR: 0.99996144	ϕ ANGLE: -0°03'12.62"	
ESTABLISHED BY: GeoMetrics GPS, INC.	DISTANCES AND DIRECTIONS TO REFERENCE MARKS AND PROMINENT OBJECTS OBSERVED AT STATION		
	OBJECT	DISTANCE	AZIMUTH
VERTICAL DATUM NAVD 88	(SEE SKETCH BELOW)		
ELEVATION (FT.) 806.20			
VERTICAL ORDER: THIRD			

DESCRIPTION OF STATION: The station is a standard Jackson County, Ohio aluminum survey disk stamped SAND HILL 32 1997 set flush with the ground in the top of a reinforced poured-in-place concrete monument located in Jackson County, Ohio about 4 miles northeast of Jackson. To reach the station from the intersection of State Route 93 and State Route 788 in Jackson proceed northeast along State Route 788 a distance of 3.9 miles to its intersection with Sand Hill Road and the station on the right near creek dam.

SKETCH OF STATION:
 APPROX. SCALE: 1" = 40'



THIS SURVEY DATA PREPARED
 USING 1 meter = 3.28083333 feet

PREPARED BY: CEN	3/97
CHECKED BY: DAR	3/97

GEOMETRICS
 GPS, INC.

355 BUTLER ROAD
 FREDERICKSBURG, VIRGINIA
 (540) 372-3499