

**JACKSON COUNTY
GEODETIC CONTROL**

JN 97009

MAP PROJECTION: LAMBERT

ORDER OF SURVEY: FIRST

NAD 83/86 * OHIO STATE PLANE COORDINATE SYSTEM * SOUTH ZONE * U.S. SURVEY FOOT

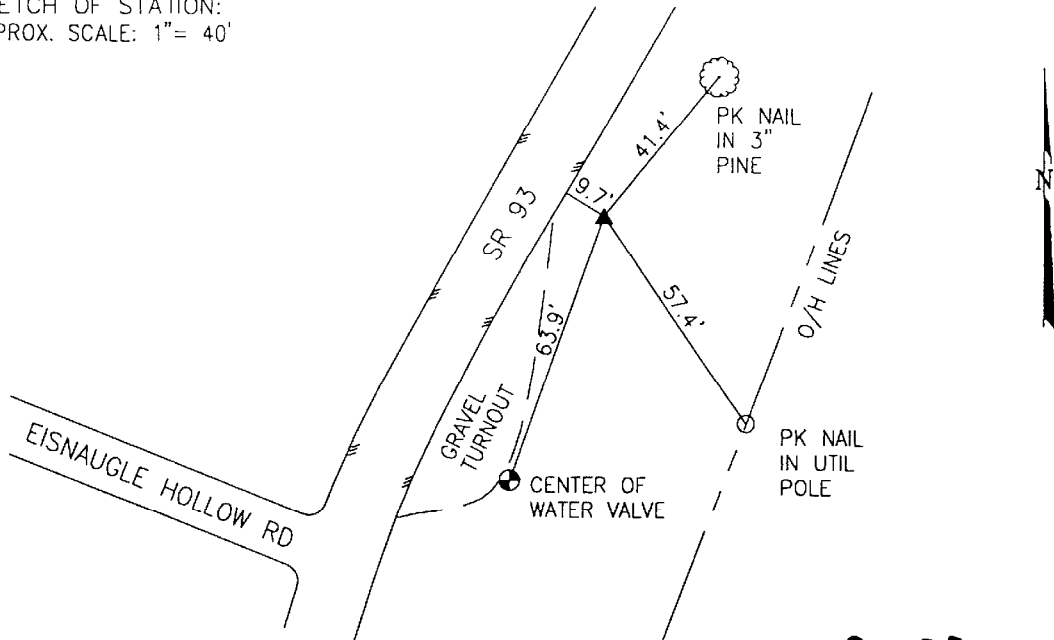
COUNTY	NAME OF STATION	YEAR
JACKSON	31 EISNAUGLE	1997

N: 395114.656	E: 1934070.577	LAT: 39°05'05.18411"	LONG: 82°37'16.65543"
GRID FACTOR: 0.99994950	SEA LEVEL FACTOR: 0.99996729	θ ANGLE: -0°04'37.07"	

ESTABLISHED BY: GeoMetrics GPS, INC.	DISTANCES AND DIRECTIONS TO REFERENCE MARKS AND PROMINENT OBJECTS OBSERVED AT STATION		
	OBJECT	DISTANCE	AZIMUTH
VERTICAL DATUM NAVD 88	(SEE SKETCH BELOW)		
ELEVATION (FT.) 683.85			
VERTICAL ORDER: THIRD			

DESCRIPTION OF STATION: The station is a standard Jackson County, Ohio aluminum survey disk stamped EISNAUGLE 31 1997 set flush with the ground in the top of a reinforced poured-in-place concrete monument located in Jackson County, Ohio about 2 miles north of Jackson. To reach the station from the intersection of State Route 93 and State Route 788 proceed northeast along State Route 93 a distance of 2.1 miles to its intersection with Eisnaugle Hollow Road and the station on the right.

SKETCH OF STATION:
APPROX. SCALE: 1" = 40'



THIS SURVEY DATA PREPARED
USING 1 meter = 3.28083333 feet

PREPARED BY: CEN	3/97
CHECKED BY: DAR	3/97

GEOMETRICS
GPS, INC.

355 BUTLER ROAD
FREDERICKSBURG, VIRGINIA
(540) 372-3499