

**JACKSON COUNTY
GEODETIC CONTROL**

JN 97009

MAP PROJECTION: LAMBERT
NAD 83/86 * OHIO STATE PLANE COORDINATE SYSTEM * SOUTH ZONE * U.S. SURVEY FOOT

ORDER OF SURVEY: FIRST

COUNTY	NAME OF STATION	YEAR
JACKSON	29 CANTERS CAVE	1997

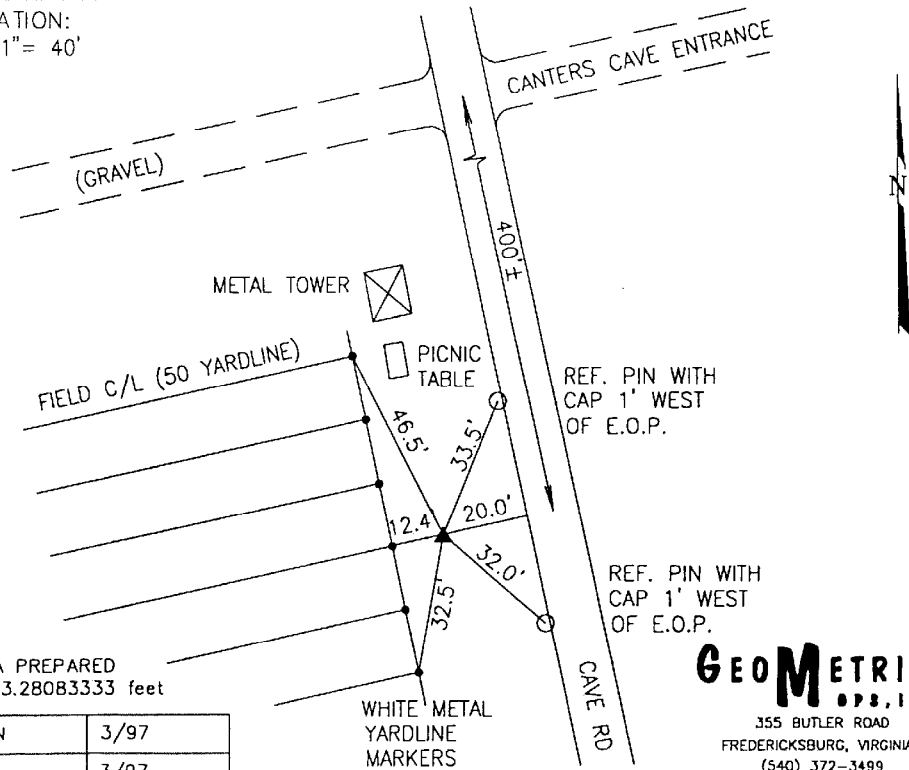
N: 409052.190 E: 1917627.460 LAT: 39°07'22.67734" LONG: 82°40'45.54789"

GRID FACTOR: 0.99994626 SEA LEVEL FACTOR: 0.99997021 \ominus ANGLE: -0°06'49.61"

ESTABLISHED BY: GeoMetrics GPS, INC.	DISTANCES AND DIRECTIONS TO REFERENCE MARKS AND PROMINENT OBJECTS OBSERVED AT STATION		
	OBJECT	DISTANCE	AZIMUTH
VERTICAL DATUM NAVD 88	(SEE SKETCH BELOW)		
ELEVATION (FT.) 622.72			
VERTICAL ORDER: THIRD			

DESCRIPTION OF STATION: The station is a standard Jackson County, Ohio aluminum survey disk stamped CANTERS CAVE 29 1997 set flush with the ground in the top of a reinforced poured-in-place concrete monument located in Jackson County, Ohio about 5 miles northwest of Jackson. To reach the station from the intersection of State Route 93 and US Route 35 proceed northwest along US Route 35 for a distance of 5.1 miles to its intersection with Caves Road, Route T223. Turn right and proceed northeast along Caves Road for a distance of 0.5 miles to its intersection with Valentine Road. Turn right and proceed southeast along Caves Road for a distance of 0.6 miles to the station on the right. The station is approximately 15 yards south of the centerline of a 100 yard Soccer Field. Permission was obtained from Anita Harris, Executive Director of Operations, Canters Cave (614) 286-4058.

SKETCH OF STATION:
APPROX. SCALE: 1" = 40'



THIS SURVEY DATA PREPARED
USING 1 meter = 3.28083333 feet

PREPARED BY: CEN	3/97
CHECKED BY: DAR	3/97

GEOMETRICS
GPS, INC.

355 BUTLER ROAD
FREDERICKSBURG, VIRGINIA
(540) 372-3499