

JACKSON COUNTY
 GEODETIC CONTROL

JN 97009

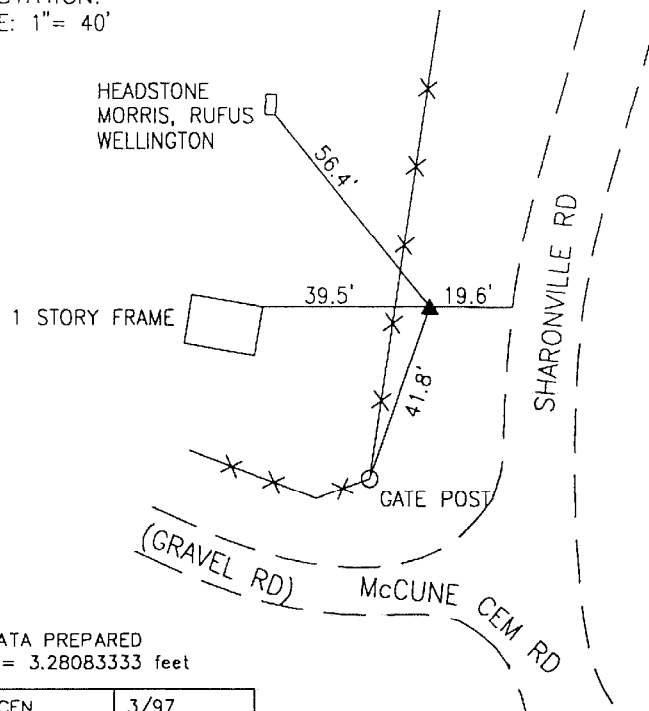
MAP PROJECTION: LAMBERT
 NAD 83/86 * OHIO STATE PLANE COORDINATE SYSTEM * SOUTH ZONE * U.S. SURVEY FOOT

ORDER OF SURVEY: FIRST

COUNTY	NAME OF STATION		YEAR
JACKSON	28 McCUNE		1997
N: 400422.498	E: 1901474.761	LAT: 39°05'57.01110"	LONG: 82°44'10.23057"
GRID FACTOR: 0.99994823	SEA LEVEL FACTOR: 0.99995407	⊖ ANGLE: -0°08'59.49"	
ESTABLISHED BY: GeoMetrics GPS, INC.	DISTANCES AND DIRECTIONS TO REFERENCE MARKS AND PROMINENT OBJECTS OBSERVED AT STATION		
	OBJECT	DISTANCE	AZIMUTH
VERTICAL DATUM NAVD 88	(SEE SKETCH BELOW)		
ELEVATION (FT.) 960.31			
VERTICAL ORDER: THIRD			

DESCRIPTION OF STATION: The station is a standard Jackson County, Ohio aluminum survey disk stamped MC CUNE 28 1997 set flush with the ground in the top of a reinforced poured-in-place concrete monument located in Jackson County, Ohio about 6 miles northwest of Jackson. To reach the station from the intersection of State Route 93 and US Route 35 proceed northwest along US Route 35 for a distance of 4.5 miles to its intersection with Oakland Road, Route 21. Turn left and proceed south along Oakland Road for a distance of 3.0 miles to its intersection with McCune Cemetery Road. Turn right and proceed west along McCune Cemetery Road for a distance of 1.9 miles to its intersection with Sharonville Road and the station on the left.

SKETCH OF STATION:
 APPROX. SCALE: 1" = 40'



THIS SURVEY DATA PREPARED
 USING 1 meter = 3.28083333 feet

PREPARED BY: CEN	3/97
CHECKED BY: DAR	3/97

GEOMETRICS
 ops, inc.
 355 BUTLER ROAD
 FREDERICKSBURG, VIRGINIA
 (540) 372-3499