

JACKSON COUNTY, OHIO  
 GEODETIC CONTROL SURVEY

W.O. 96017

MAP PROJECTION: LAMBERT

ORDER OF SURVEY: FIRST

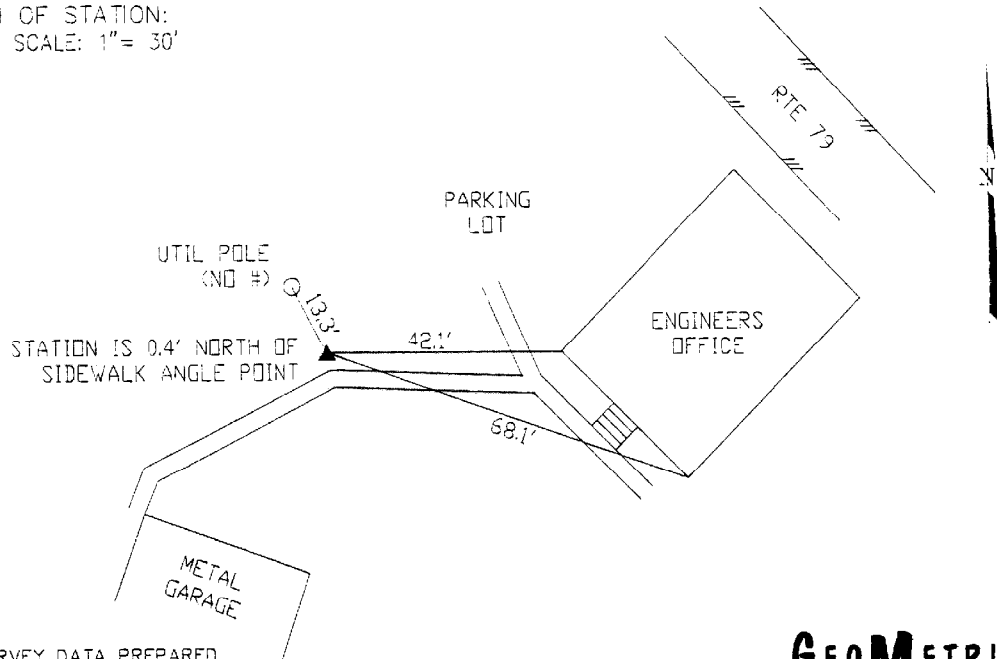
NAD 83/86 \* OHIO STATE PLANE COORDINATE SYSTEM \* SOUTH ZONE

COUNTY	NAME OF STATION		YEAR
JACKSON COUNTY	12 ENGINEER		1996
N: 365764.868	E: 1950766.130	LAT.: 39°00'15.24616"	LONG.: 82°33'44.65486"
GRID FACTOR: 0.99995779	SEA LEVEL FACTOR: 0.99996442	⊕ ANGLE: -0°02'22.55"	
ESTABLISHED BY: GeoMetrics GPS, INC.	YEAR 1996	DISTANCES AND DIRECTIONS TO REFERENCE MARKS AND PROMINENT OBJECTS OBSERVED AT STATION	
		OBJECT	DISTANCE-FT. MAG. AZIMUTH
VERTICAL DATUM NAVD 88		(SEE SKETCH BELOW)	
ELEVATION (FT.) 743.84			
VERTICAL ORDER: THIRD			

DESCRIPTION OF STATION:

The station is a standard Jackson County, Ohio aluminum survey disk stamped ENGINEER 12 1996 set flush with the ground in the top of a reinforced poured-in-place concrete monument located in Jackson County, Ohio about 5.0 miles southeast of the town of Jackson at the Jackson County Engineers Office. To reach the state from the intersection of U.S. Highway 35 and Route 32 in Jackson proceed southeast along U.S. Highway 35 for a distance of 3.0 miles to its intersection with Route 55, Standpipe Road. Turn left and proceed east along Standpipe Road for a distance of 0.05 miles to its intersection with Route 79, Clary Road. Turn right and proceed southeast along Clary Road for a distance of 0.8 miles to its intersection with the County Engineers Office and the station on the right.

SKETCH OF STATION:  
 APPROX. SCALE: 1" = 30'



THIS SURVEY DATA PREPARED  
 USING 1 meter = 3.280833 feet

PREPARED BY: EJP	7/96
CHECKED BY: DAR	7/96

**GEOMETRICS**  
 GPS, INC.

355 BUTLER ROAD  
 FREDERICKSBURG, VIRGINIA  
 (540) 372-3499