

JACKSON COUNTY, OHIO
 GEODETIC CONTROL SURVEY

W.O. 96017

MAP PROJECTION: LAMBERT

ORDER OF SURVEY: FIRST

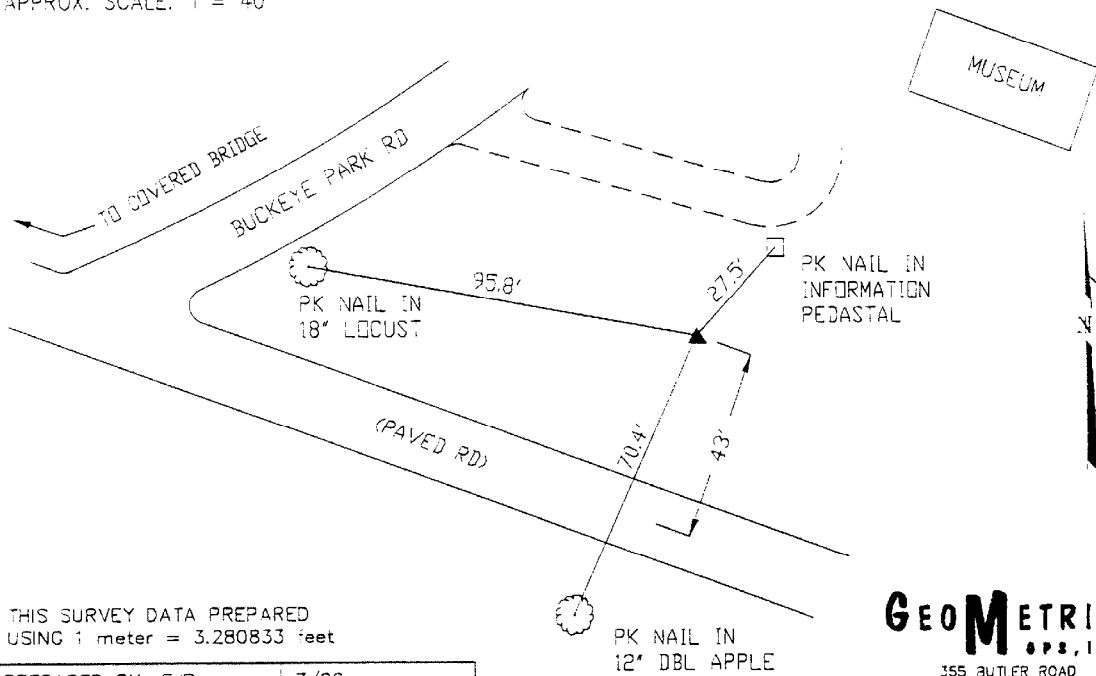
NAD 83/86 * OHIO STATE PLANE COORDINATE SYSTEM * SOUTH ZONE

COUNTY		NAME OF STATION		YEAR
JACKSON COUNTY		9 BUCKEYE		1996
N: 384106.723	E: 1980270.327	LAT.: 39°03'16.57901"	LONG.: 82°27'30.78537"	
GRID FACTOR: 0.99995238	SEA LEVEL FACTOR: 0.99996913	ANGLE: +0°01'34.68"		
ESTABLISHED BY: GeoMetrics GPS, INC.	YEAR 1996	DISTANCES AND DIRECTIONS TO REFERENCE MARKS AND PROMINENT OBJECTS OBSERVED AT STATION		
		OBJECT	DISTANCE-FT.	MAG. AZIMUTH
VERTICAL DATUM	NAVD 88	(SEE SKETCH BELOW)		
ELEVATION (FT.)	645.47			
VERTICAL ORDER:	THIRD			

DESCRIPTION OF STATION:

The station is a standard Jackson County, Ohio aluminum survey disk stamped BUCKEYE 9 1996 set flush with the ground in the top of a reinforced poured-in-place concrete monument located in Jackson County, Ohio about 5.0 miles southeast of the town of Berlin Crossroads . To reach the station from the intersection of Route 124 and Route 327 in Berlin Crossroads proceed east along Route 124 a distance of 4.0 miles to its intersection with Route 58, Buckeye Furnace Road. Turn right and proceed southeast along Buckeye Furnace Road a distance of 2.2 miles to its intersection with Route T-167, Buckeye Park Road. Turn right and proceed south along Buckeye Park Road a distance of 0.8 miles to its intersection with Buckeye Furnace park office and museum/store and the station on the left.

SKETCH OF STATION:
 APPROX. SCALE: 1" = 40'



THIS SURVEY DATA PREPARED
 USING 1 meter = 3.280833 feet

PREPARED BY: EJP	7/96
CHECKED BY: DAR	7/96

GEOMETRICS
 GPS, INC.
 355 BUTLER ROAD
 FREDERICKSBURG, VIRGINIA
 (540) 372-3499