

JACKSON COUNTY
 GEODETIC CONTROL

JN 97009

MAP PROJECTION: LAMBERT

ORDER OF SURVEY: FIRST

NAD 83/86 * OHIO STATE PLANE COORDINATE SYSTEM * SOUTH ZONE * U.S. SURVEY FOOT

COUNTY	NAME OF STATION	YEAR
JACKSON	41 GILLILAND	1997

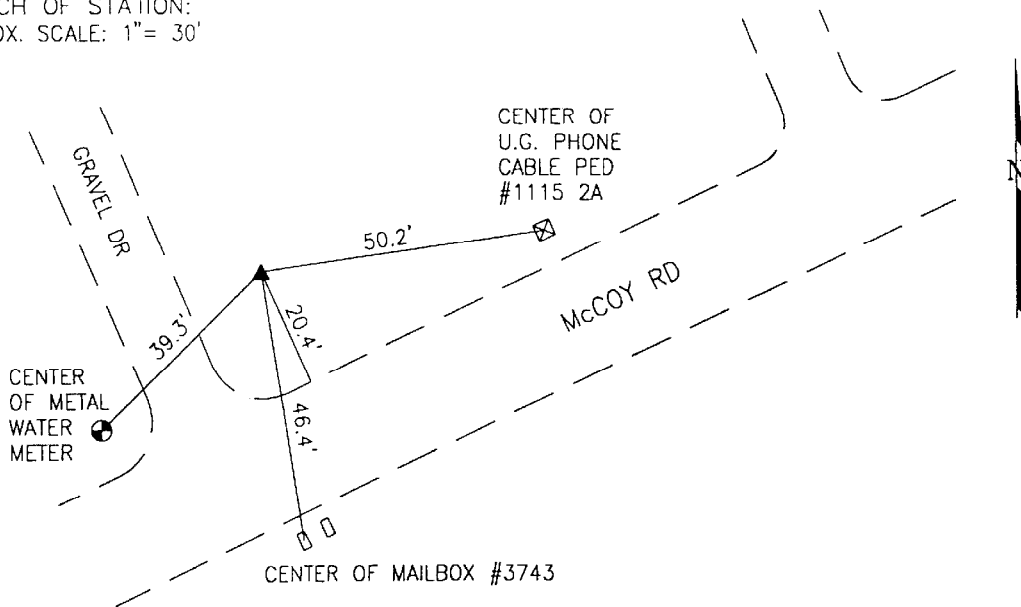
N: 336424.934 E: 1925830.732 LAT: 38°55'24.94659" LONG: 82°38'59.92183"

GRID FACTOR: 0.99996804 SEA LEVEL FACTOR: 0.99996350 \ominus ANGLE: -0°05'42.59"

ESTABLISHED BY: GeoMetrics GPS, INC.	DISTANCES AND DIRECTIONS TO REFERENCE MARKS AND PROMINENT OBJECTS OBSERVED AT STATION		
	OBJECT	DISTANCE	AZIMUTH
VERTICAL DATUM NAVD 88	(SEE SKETCH BELOW)		
ELEVATION (FT.) 763.00			
VERTICAL ORDER: THIRD			

DESCRIPTION OF STATION: The station is a standard Jackson County, Ohio aluminum survey disk stamped GILLILAND 41 1997 set flush with the ground in the top of a reinforced poured-in-place concrete monument located approximately 4.5 miles northwest of Oak Hill, Ohio. To reach the station from the intersection of State Route 32 and State Route 93 proceed south along State Route 93 for a distance of 1.2 miles to its intersection with Fourmile Road. Turn Right and proceed south along Fourmile Road a distance of 1.3 miles to its intersection with Franklin Valley Road. Turn right continuing south along Fourmile Road a distance of 7.0 miles to its intersection with McCoy Road. Turn left and proceed northeast along McCoy Road a distance of 0.1 miles to its intersection with a gravel drive at David Gilliland's residence and the station on the left. Permission to set station was obtained from property owner Dave Gilliland.

SKETCH OF STATION:
 APPROX. SCALE: 1" = 30'



THIS SURVEY DATA PREPARED
 USING 1 meter = 3.28083333 feet

PREPARED BY: CEN	3/97
CHECKED BY: DAR	3/97

GEOMETRICS
 GPS, INC.

355 BUTLER ROAD
 FREDERICKSBURG, VIRGINIA
 (540) 372-3499