

JACKSON COUNTY  
 GEODETIC CONTROL  
 MAP PROJECTION: LAMBERT  
 NAD 83/86 \* OHIO STATE PLANE COORDINATE SYSTEM \* SOUTH ZONE \* U.S. SURVEY FOOT

JN 97009

ORDER OF SURVEY: FIRST

COUNTY	NAME OF STATION	YEAR
JACKSON	38 MAYHEW	1997

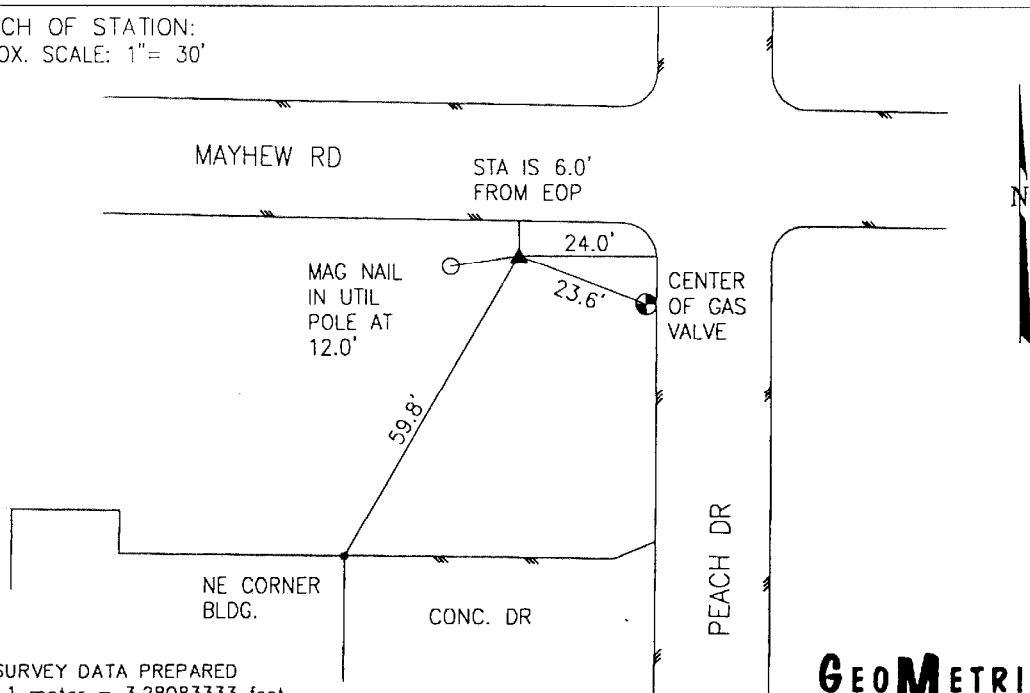
N: 373583.147	E: 1933119.607	LAT: 39°01'32.34495"	LONG: 82°37'28.33958"
---------------	----------------	----------------------	-----------------------

GRID FACTOR: 0.99995539	SEA LEVEL FACTOR: 0.99996484	ϕ ANGLE: -0°04'44.48"
-------------------------	------------------------------	-----------------------

ESTABLISHED BY: GeoMetrics GPS, INC.	DISTANCES AND DIRECTIONS TO REFERENCE MARKS AND PROMINENT OBJECTS OBSERVED AT STATION		
	OBJECT	DISTANCE	AZIMUTH
VERTICAL DATUM NAVD 88	(SEE SKETCH BELOW)		
ELEVATION (FT.) 735.05			
VERTICAL ORDER: THIRD			

DESCRIPTION OF STATION: The station is a standard Jackson County, Ohio aluminum survey disk stamped MAYHEW 38 1997 set flush with the ground in the top of a reinforced poured-in-place concrete monument located in Jackson County, Ohio about 1 mile south of Jackson, Ohio. To reach the station from the intersection of Route 32/124 and Route 193 proceed south along State Route 193 for a distance of 1 mile to its intersection with Mayhew Road. Turn left and proceed west along Mayhew Road to its intersection with Peach Drive and the station on the left.

SKETCH OF STATION:  
 APPROX. SCALE: 1" = 30'



THIS SURVEY DATA PREPARED  
 USING 1 meter = 3.28083333 feet

PREPARED BY: CEN	3/97
CHECKED BY: DAR	3/97

**GEOMETRICS**  
 OPS, INC.  
 355 BUTLER ROAD  
 FREDERICKSBURG, VIRGINIA  
 (540) 372-3499