

**JACKSON COUNTY
GEODETIC CONTROL**

JN 97009

MAP PROJECTION: LAMBERT

ORDER OF SURVEY: FIRST

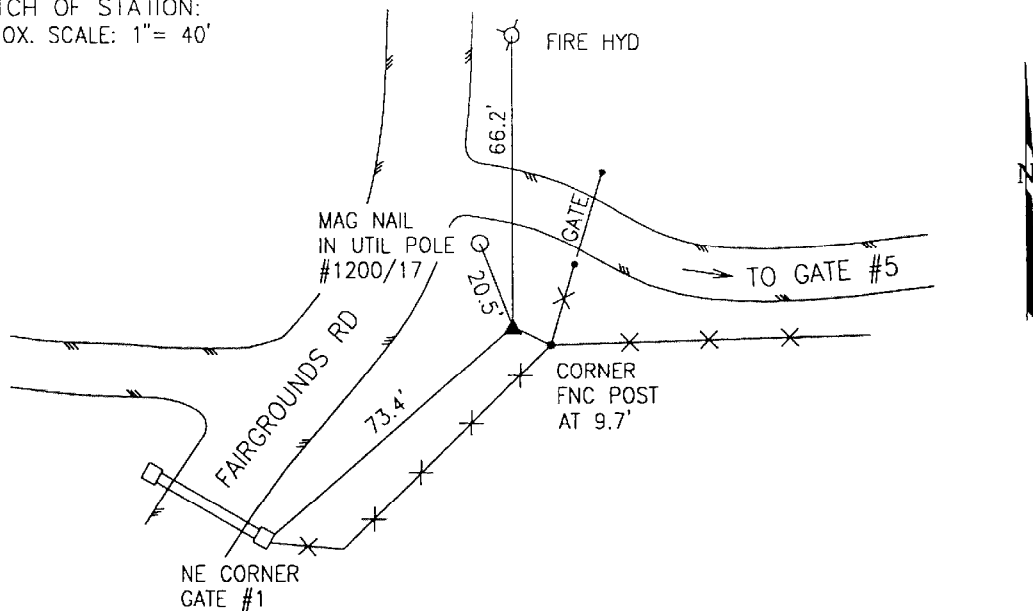
NAD 83/86 * OHIO STATE PLANE COORDINATE SYSTEM * SOUTH ZONE * U.S. SURVEY FOOT

COUNTY	NAME OF STATION		YEAR
JACKSON	33 CO FAIR		1997
N: 403300.966	E: 1956166.355	LAT: 39°06'26.30003"	LONG: 82°32'36.47304"
GRID FACTOR: 0.99994754	SEA LEVEL FACTOR: 0.99996625	ϕ ANGLE: -0°01'39.29"	

ESTABLISHED BY: GeoMetrics GPS, INC.	DISTANCES AND DIRECTIONS TO REFERENCE MARKS AND PROMINENT OBJECTS OBSERVED AT STATION		
	OBJECT	DISTANCE	AZIMUTH
VERTICAL DATUM NAVD 88	(SEE SKETCH BELOW)		
ELEVATION (FT.) 705.66			
VERTICAL ORDER: THIRD			

DESCRIPTION OF STATION: The station is a standard Jackson County, Ohio aluminum survey disk stamped CO FAIR 33 1997 set flush with the ground in the top of a reinforced poured-in-place concrete monument located in Jackson County, Ohio in the town of Wellston Ohio. To reach the station from the intersection of Route 93 and Route 327 proceed west along Route 93 for a distance of 0.2 miles to its intersection with Driving Park Road. Turn left and proceed west along Driving Park Road for a distance of 0.2 miles to its intersection with Fairgrounds Road. Turn left and proceed southwest along Fairgrounds Road for a distance of 0.25 miles to its intersection with gate 1 and the station on the left.

SKETCH OF STATION:
APPROX. SCALE: 1" = 40'



THIS SURVEY DATA PREPARED
USING 1 meter = 3.28083333 feet

PREPARED BY: CEN	3/97
CHECKED BY: DAR	3/97

GEOMETRICS
GPS, INC.

355 BUTLER ROAD
FREDERICKSBURG, VIRGINIA
(540) 372-3499