

**JACKSON COUNTY
GEODETIC CONTROL**

JN 97009

MAP PROJECTION: LAMBERT

ORDER OF SURVEY: FIRST

NAD 83/86 * OHIO STATE PLANE COORDINATE SYSTEM * SOUTH ZONE * U.S. SURVEY FOOT

COUNTY	NAME OF STATION	YEAR
JACKSON	30 LAKE KATHARINE	1997

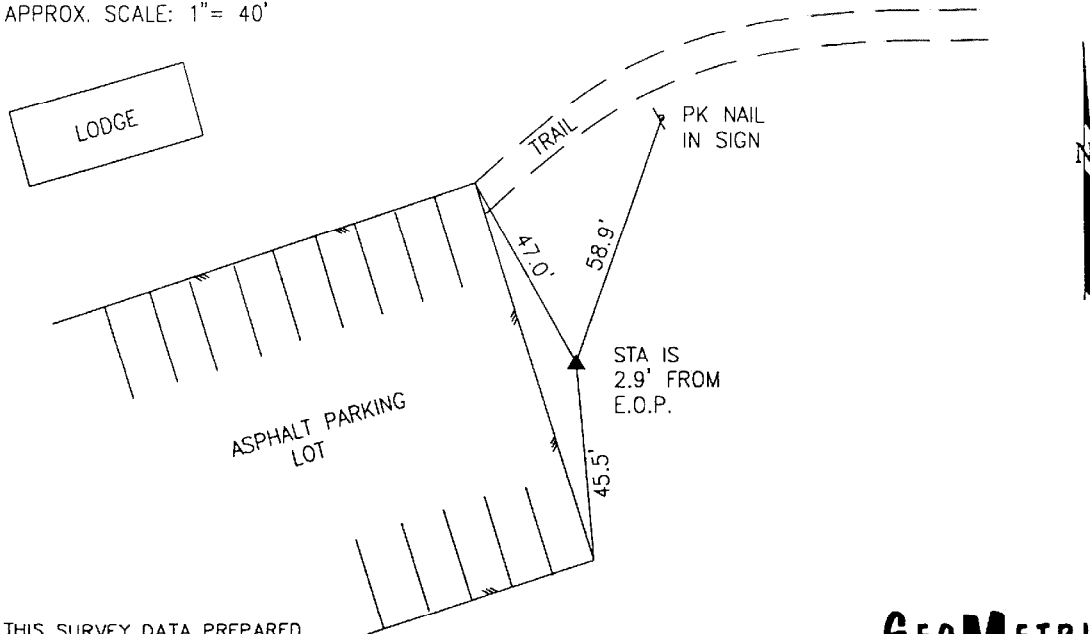
N: 395576.487 E: 1920404.888 LAT: 39°05'09.53157" LONG: 82°40'09.98288"

GRID FACTOR: 0.99994939 SEA LEVEL FACTOR: 0.99996310 \ominus ANGLE: -0°06'27.05"

ESTABLISHED BY: GeoMetrics GPS, INC.	DISTANCES AND DIRECTIONS TO REFERENCE MARKS AND PROMINENT OBJECTS OBSERVED AT STATION		
	OBJECT	DISTANCE	AZIMUTH
VERTICAL DATUM NAVD 88	(SEE SKETCH BELOW)		
ELEVATION (FT.) 771.47			
VERTICAL ORDER: THIRD			

DESCRIPTION OF STATION: The station is a standard Jackson County, Ohio aluminum survey disk stamped LAKE KATHARINE 30 1997 set flush with the ground in the top of a reinforced poured-in-place concrete monument located in Jackson County, Ohio about 3 miles northwest of Jackson. To reach the station from the intersection of State Route 93 and State Route 788 proceed south along State Route 93 a distance of 0.3 miles to its intersection with State Street. Turn right and proceed west along State Street 0.7 miles to its intersection with Beaver Pike, Route 76. Continue ahead and proceed west along Beaver Pike 1.1 miles to its intersection with Lake Katharine Road. Turn right and proceed north along Lake Katharine Road a distance of 2.0 miles to a parking lot and the station near the east end of the parking lot.

SKETCH OF STATION:
APPROX. SCALE: 1" = 40'



THIS SURVEY DATA PREPARED
USING 1 meter = 3.28083333 feet

PREPARED BY: CEN	3/97
CHECKED BY: DAR	3/97

GEOMETRICS
GPS, INC.

355 BUTLER ROAD
FREDERICKSBURG, VIRGINIA
(540) 372-3499