

JACKSON COUNTY  
 GEODETIC CONTROL

JN 97009

MAP PROJECTION: LAMBERT

ORDER OF SURVEY: FIRST

NAD 83/86 \* OHIO STATE PLANE COORDINATE SYSTEM \* SOUTH ZONE \* U.S. SURVEY FOOT

COUNTY	NAME OF STATION	YEAR
JACKSON	26 BORLAND	1997

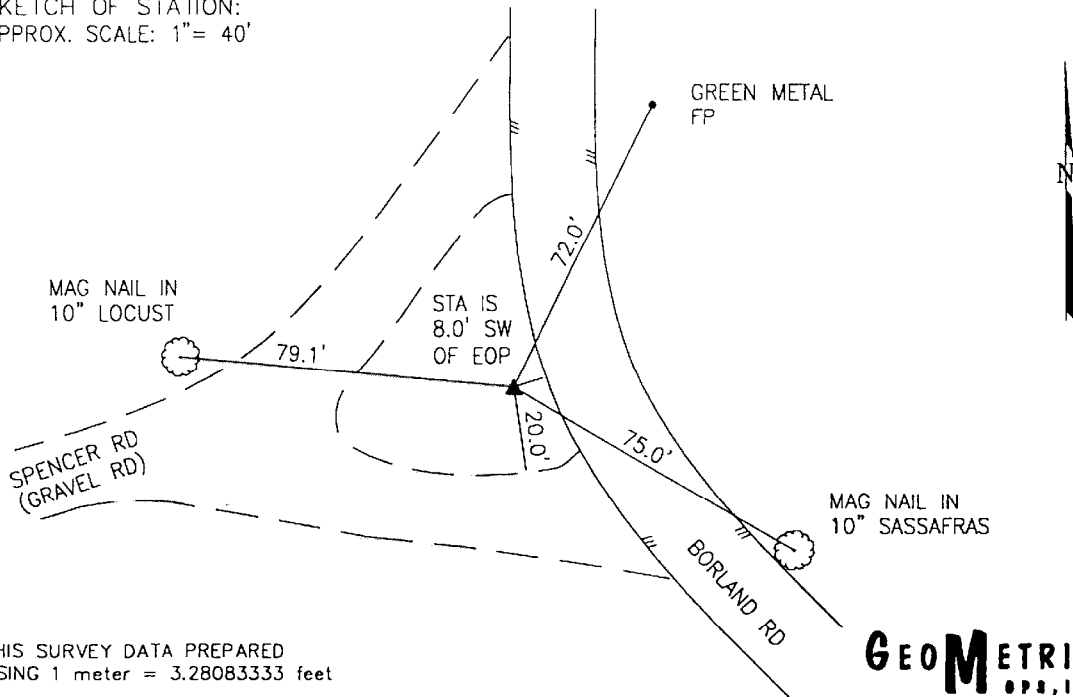
N: 426748.119      E: 1911959.816      LAT: 39°10'17.47215"      LONG: 82°41'57.96327"

GRID FACTOR: 0.99994277      SEA LEVEL FACTOR: 0.99995408       $\ominus$  ANGLE: -0°07'35.56"

ESTABLISHED BY: GeoMetrics GPS, INC.	DISTANCES AND DIRECTIONS TO REFERENCE MARKS AND PROMINENT OBJECTS OBSERVED AT STATION		
	OBJECT	DISTANCE	AZIMUTH
VERTICAL DATUM NAVD 88	(SEE SKETCH BELOW)		
ELEVATION (FT.) 959.94			
VERTICAL ORDER: THIRD			

DESCRIPTION OF STATION: The station is a standard Jackson County, Ohio aluminum survey disk stamped BORLAND 26 1997 set flush with the ground in the top of a reinforced poured-in-place concrete monument located in Jackson County, Ohio about 3.5 miles west southwest of the town of Byer. To reach the station from the intersection of State Route 327 and the Railroad crossing in Byer proceed northwest along State Route 327 for a distance of 3.3 miles to its intersection with Route 29, Raysville Road. Turn left and proceed southeast along Raysville Road for a distance of 0.7 miles to its intersection with Borland Road. Continue ahead and proceed southwest along Borland road for a distance of 2.3 miles to its intersection with Willis Road. Turn left and proceed southeast along Borland Road for a distance of 0.4 miles to its intersection with Spencer Road and the station on the right.

SKETCH OF STATION:  
 APPROX. SCALE: 1" = 40'



THIS SURVEY DATA PREPARED  
 USING 1 meter = 3.28083333 feet

PREPARED BY: CEN	3/97
CHECKED BY: DAR	3/97

**GEOMETRICS**  
 GPS, INC.  
 355 BUTLER ROAD  
 FREDERICKSBURG, VIRGINIA  
 (540) 372-3499