

JACKSON COUNTY, OHIO  
 GEODETIC CONTROL SURVEY

W.O. 96017

MAP PROJECTION: LAMBERT

ORDER OF SURVEY: FIRST

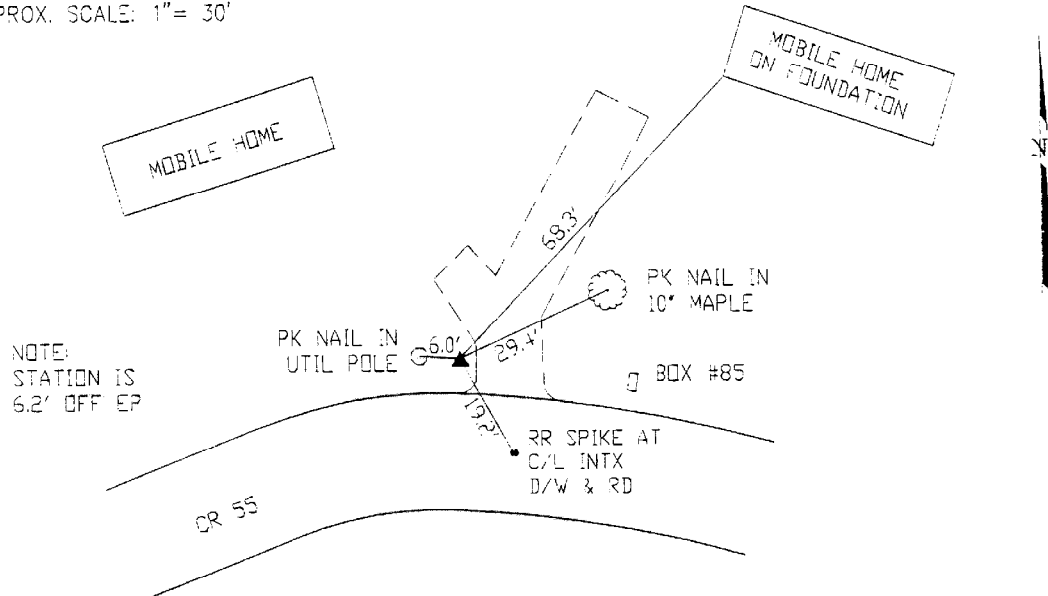
NAD 83/86 \* OHIO STATE PLANE COORDINATE SYSTEM \* SOUTH ZONE

COUNTY		NAME OF STATION		YEAR
JACKSON COUNTY		24 HUGHES		1996
N: 311420.798	E: 1947484.746	LAT.: 38°51'18.05856"	LONG.: 82°34'25.66121"	
GRID FACTOR: 0.99997830	SEA LEVEL FACTOR: 0.99996022	⇒ ANGLE: -0°02'48.57"		
ESTABLISHED BY: GeoMetrics GPS, INC.	YEAR '996	DISTANCES AND DIRECTIONS TO REFERENCE MARKS AND PROMINENT OBJECTS OBSERVED AT STATION		
OBJECT		DISTANCE-FT.	MAG. AZIMUTH	
VERTICAL DATUM NAVD 88		(SEE SKETCH BELOW)		
ELEVATION (FT.) 831.41				
VERTICAL ORDER: THIRD				

DESCRIPTION OF STATION:

The station is a standard Jackson County, Ohio aluminum survey disk stamped HUGHES 24 1996 set flush with the ground in the top of a reinforced poured-in-place concrete monument located in Jackson County, Ohio about 1.5 miles south of the town of Oak Hill. To reach the station from the intersection of Route 279W and Route 93W in Oak Hill proceed south along Route 93 for a distance of 3.1 miles to its intersection with Route 65A. Turn left and proceed south along Route 65A for a distance of 0.2 miles to its intersection with Route 65, Gallia Blackfork Road. Turn left and proceed east along Gallia Blackfork Road for a distance of 1.7 miles to the station on the left.

SKETCH OF STATION:  
 APPROX. SCALE: 1" = 30'



NOTE:  
 STATION IS  
 6.2' OFF EP

THIS SURVEY DATA PREPARED  
 USING 1 meter = 3.280833 feet

PREPARED BY: EJP	7/96
CHECKED BY: DAR	7/96

**GEOMETRICS**  
 GPS, INC.

355 BUTLER ROAD  
 FREDERICKSBURG, VIRGINIA  
 (540) 372-3499