

JACKSON COUNTY, OHIO
 GEODETIC CONTROL SURVEY

W.O. 96017

MAP PROJECTION: LAMBERT

ORDER OF SURVEY: FIRST

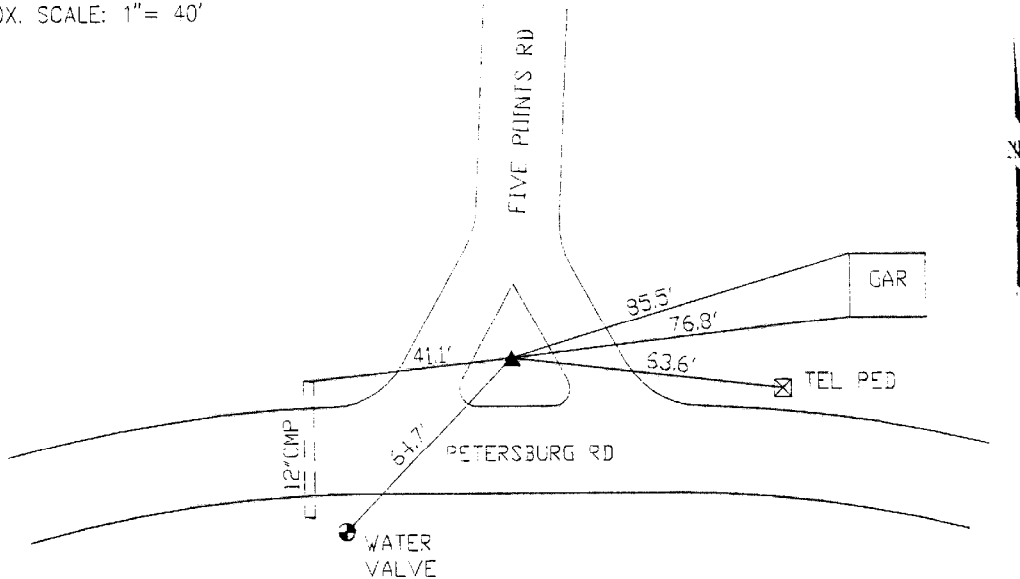
NAD 83/86 * OHIO STATE PLANE COORDINATE SYSTEM * SOUTH ZONE

COUNTY		NAME OF STATION		YEAR
JACKSON COUNTY		18 SUGARCAMP		1996
N: 350332.113	E: 1906274.821	LAT.: 38°57'42.01686"	LONG.: 82°43'07.80107"	
GRID FACTOR: 0.99996295	SEA LEVEL FACTOR: 0.99996676	⊕ ANGLE: -0°08'19.38"		
ESTABLISHED BY: GeoMetrics GPS, INC.	YEAR 1996	DISTANCES AND DIRECTIONS TO REFERENCE MARKS AND PROMINENT OBJECTS OBSERVED AT STATION		
OBJECT		DISTANCE - FT.	MAG. AZIMUTH	
VERTICAL DATUM NAVD 88		(SEE SKETCH BELOW)		
ELEVATION (FT.) 694.88				
VERTICAL ORDER: THIRD				

DESCRIPTION OF STATION:

The station is a standard Jackson County, Ohio aluminum survey disk stamped SUGARCAMP 18 1996 set flush with the ground in the top of a reinforced poured-in-place concrete monument located in Jackson County, Ohio about 8.0 miles southwest of the town of Jackson. To reach the station from the intersection of Route 32 and Route 776 proceed south along Route 776 for a distance of 3.1 miles to its intersection with Route 42, Petersburg Road. Turn left and proceed southeast along Petersburg Road for a distance of 3.1 miles to its intersection with Route 20, Five Points Road and the station on the left.

SKETCH OF STATION:
 APPROX. SCALE: 1" = 40'



THIS SURVEY DATA PREPARED
 USING 1 meter = 3.280833 feet

PREPARED BY: EJP	7/96
CHECKED BY: DAR	7/96

GEOMETRICS
 GPS, INC.

355 BUTLER ROAD
 FREDERICKSBURG, VIRGINIA
 (540) 372-3499