

JACKSON COUNTY, OHIO
 GEODETIC CONTROL SURVEY

W.O. 96017

MAP PROJECTION: LAMBERT

ORDER OF SURVEY: FIRST

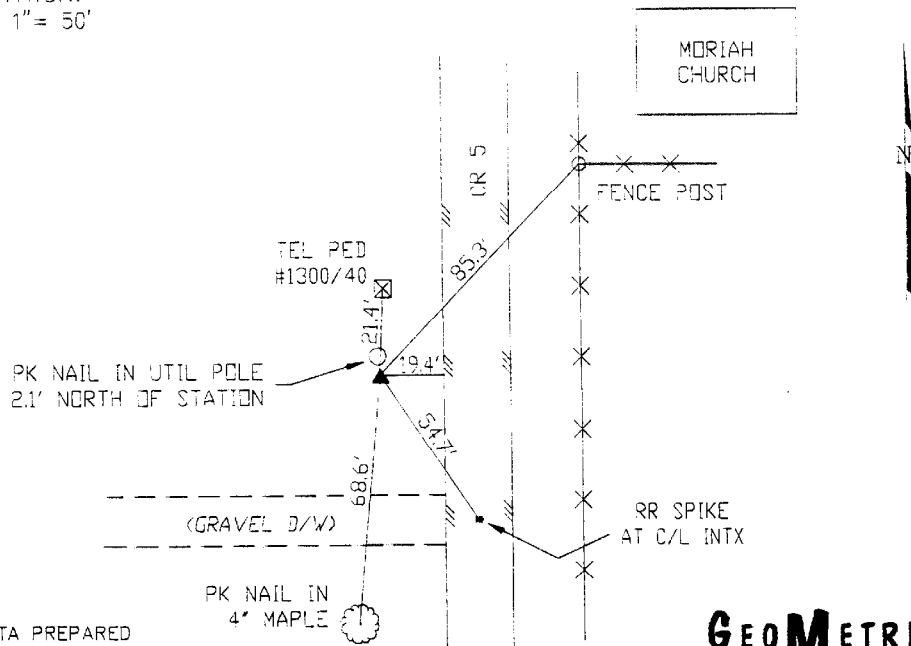
NAD 83/86 * OHIO STATE PLANE COORDINATE SYSTEM * SOUTH ZONE

COUNTY	NAME OF STATION		YEAR
JACKSON COUNTY	17 MORIAH		1996
N: 330568.226	E: 1963420.616	LAT.: 38°54'27.40128"	LONG.: 82°31'04.25813"
GRID FACTOR: 0.99997031	SEA LEVEL FACTOR: 0.99996545	θ ANGLE: -0°00'40.77"	
ESTABLISHED BY: GeoMetrics GPS, INC.	YEAR 1996	DISTANCES AND DIRECTIONS TO REFERENCE MARKS AND PROMINENT OBJECTS OBSERVED AT STATION	
OBJECT		DISTANCE-FT.	MAG. AZIMUTH
VERTICAL DATUM NAVD 88		(SEE SKETCH BELOW)	
ELEVATION (FT.) 722.26			
VERTICAL ORDER: THIRD			

DESCRIPTION OF STATION:

The station is a standard Jackson County, Ohio aluminum survey disk stamped MORIAH 17 1996 set flush with the ground in the top of a reinforced poured-in-place concrete monument located in Jackson County, Ohio about 3.0 miles northeast of the town of Oak Hill. To reach the station from the intersection of U.S. Highway 35 and Route 327 proceed south along U.S. Highway 35 for a distance of 6.4 miles to its intersection with Route 5. Turn right and proceed southwest along Route 5 for a distance of 0.1 miles to its intersection with Route T-346. Turn left and proceed southwest along Route 5 for a distance of 3.6 miles to its intersection with Moriah Church and the station on the right.

SKETCH OF STATION:
 APPROX. SCALE: 1" = 50'



THIS SURVEY DATA PREPARED
 USING 1 meter = 3.280833 feet

PREPARED BY: EJP	7/96
CHECKED BY: DAR	7/96

GEOMETRICS
 GPS, INC.

355 BUTLER ROAD
 FREDERICKSBURG, VIRGINIA
 (540) 372-3499