

JACKSON COUNTY, OHIO
 GEODETIC CONTROL SURVEY

W.O. 96017

MAP PROJECTION: LAMBERT

ORDER OF SURVEY: FIRST

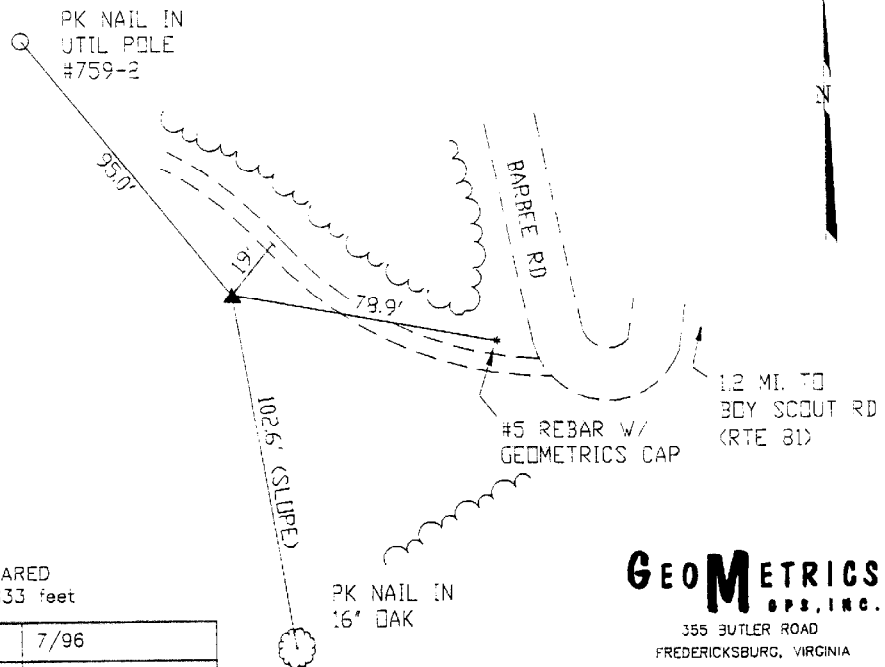
NAD 83/86 * OHIO STATE PLANE COORDINATE SYSTEM * SOUTH ZONE

COUNTY		NAME OF STATION		YEAR
JACKSON COUNTY		1 SCOUT		1996
N: 434418.793	E: 1903481.499	LAT.: 39°11'33.09225"	LONG.: 82°43'45.87037"	
GRID FACTOR: 0.99994148	SEA LEVEL FACTOR: 0.99995637	⊕ ANGLE: -0°08'44.03"		
ESTABLISHED BY: GeoMetrics GPS, NC.	YEAR 1996	DISTANCES AND DIRECTIONS TO REFERENCE MARKS AND PROMINENT OBJECTS OBSERVED AT STATION		
		OBJECT	DISTANCE-FT.	MAG. AZIMUTH
VERTICAL DATUM NAVD 88		(SEE SKETCH BELOW)		
ELEVATION (FT.) 912.17				
VERTICAL ORDER: THIRD				

DESCRIPTION OF STATION:

The station is a standard Jackson County, Ohio aluminum survey disk stamped SCOUT 1 1996 set flush with the ground in the top of a reinforced poured-in-place concrete monument located in Jackson County, Ohio about 10.0 miles northwest of the town of Jackson. To reach the station from the intersection of U.S. Highway 35 and Route 93 proceed northwest along U.S. Highway 35 a distance of 10.4 miles to its intersection with Route 27, Bronx Corners Road. Turn right and proceed north along Bronx Corners Road a distance of 0.5 miles to its intersection with Route 81, Boy Scout Road. Turn right and proceed east along Boy Scout Road a distance of 2.3 miles to its intersection with Route T-211, Barbee Road. Turn left and proceed northwest along Barbee Road a distance of 1.2 miles to its intersection with a 180 degree right turn switchback and the station on the right.

SKETCH OF STATION:
 APPROX. SCALE: 1" = 30'



THIS SURVEY DATA PREPARED
 USING 1 meter = 3.280833 feet

PREPARED BY: EJP	7/96
CHECKED BY: DAR	7/96

GEOMETRICS
 GPS, INC.

355 BUTLER ROAD
 FREDERICKSBURG, VIRGINIA
 (540) 372-3499